



# Kingston Pump Station Installation

# Situation:

- For a number of years the Kingston pump station released trash and debris into a creek which dumped into Lake Ontario.
- With the increased commitment by the Canadian Government to find solutions to the growing problem of trash and debris being dumped into the lakes, the engineers upgrading the Kingston Station turned to Fresh Creek.

# Situation:

- An underground installation was proposed at the pump station and engineered with a bypass vent to an outflow containing a TRASHMASTER™ Net Capture System unit.

# Situation:

- Working together a solution was found in the TRASHMASTER™ Net Capture System. This unit was selected because of the low flow of water passing through the bypass vent.

# Kingston Station Pro



Preparing the  
TRASHMASTER  
blank fresh from  
Rotomold process




Drilling holes for base flange and to mate to the connecting flange of the main pipe.



Holes for the base  
flange and seal  
drilled and an  
opening started



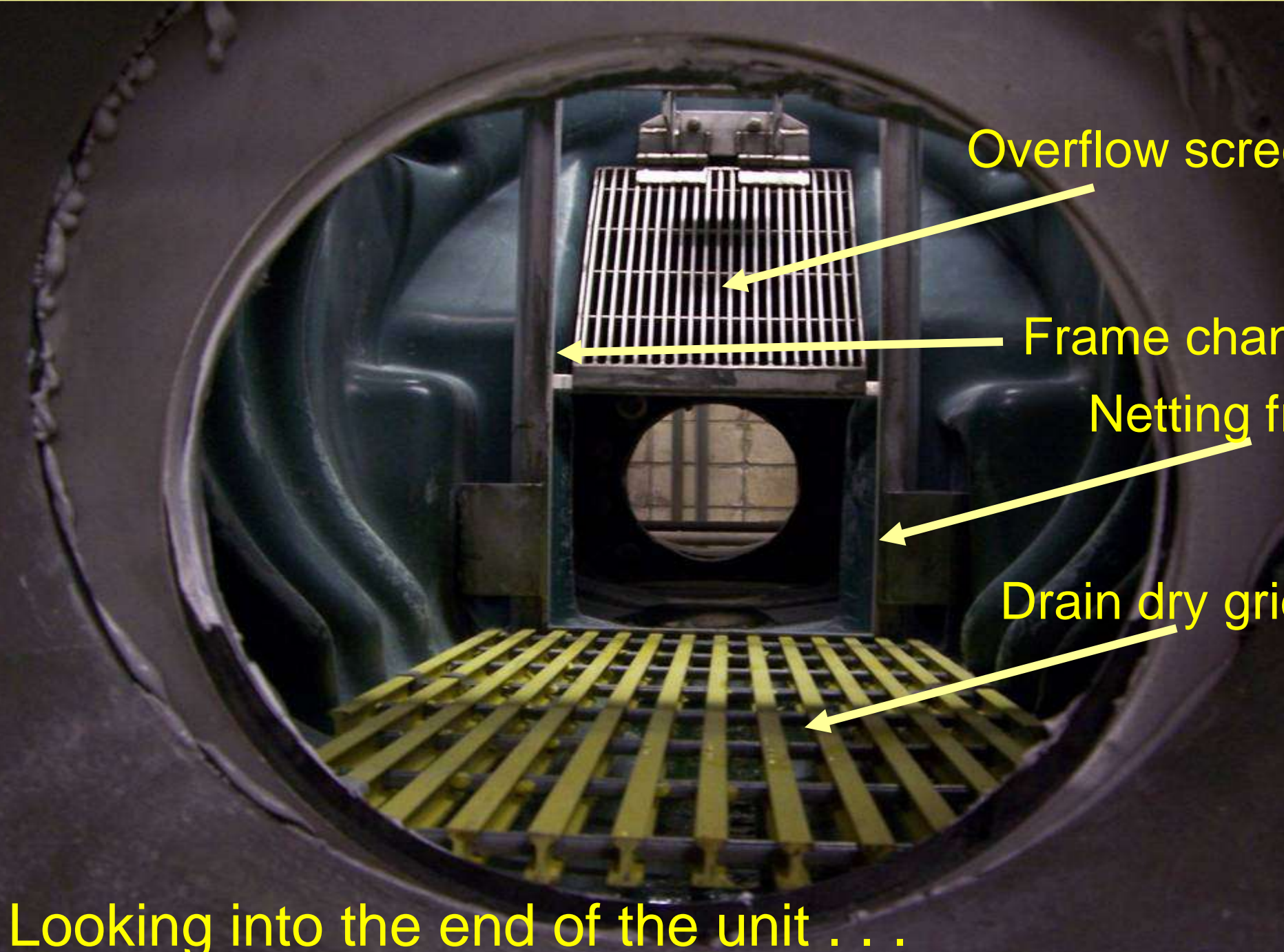
Both ends are completed  
and net guide channels  
installed.

A large, dark green pipe is shown lying on a concrete floor. At one end, a metal flange assembly is attached. The flange is circular and has several bolts protruding from its outer edge. The pipe is supported by a wooden plank. In the background, there is a blue bucket and some electrical wires.

Base flange and seal to mate to the connecting flange for the main pipe is completed at both ends.



Internal stainless steel frames and overflow grid installed and balanced.



Overflow screen

Frame char

Netting f

Drain dry gri

Looking into the end of the unit . . .

Unit completed with main pipe mating flanges attached.





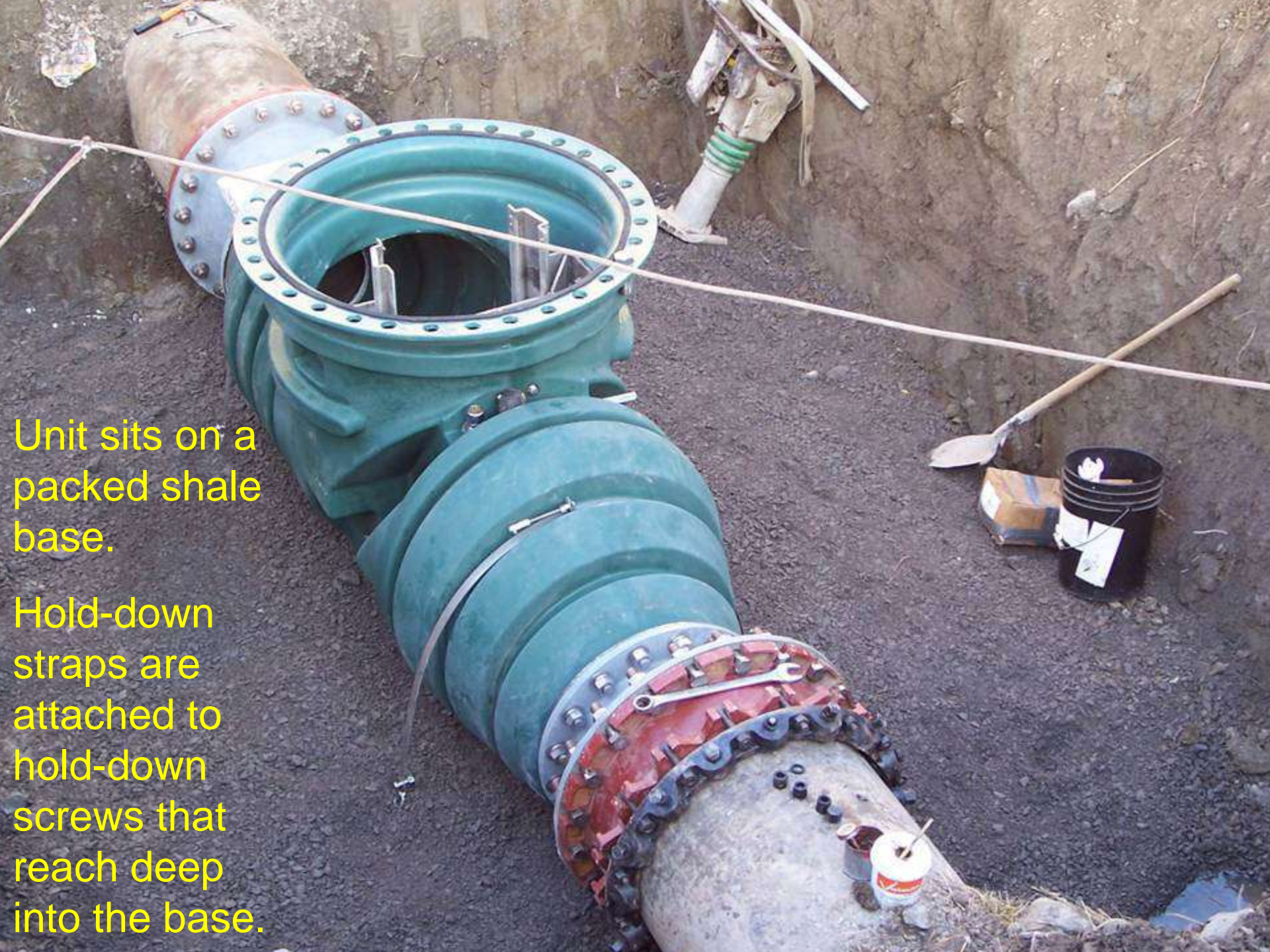
Unit being prepared for shipment. (Note hold-down straps.)



Excavation site with section removed and ready for unit.

TRASHMASTER™ unit installed. (Note mating flanges attached to main pipe.)





Unit sits on a packed shale base.

Hold-down straps are attached to hold-down screws that reach deep into the base.



10-foot long net channel sections are attached.

Channels allow top of unit to extend to ground level for easy net change-out.



Neck extension being prepared to slip over channel extensions.



Neck extension in place  
and bolted to unit.





Overview of neck extension in place and bolted to unit.

Cutaway shows how net channels extend to top of neck.



Finished installation  
being backfilled to  
ground level.



# Trashmaster™